



Standard Detail Drawings

Cement Board MD



Table of Contents

Description	Drawing number	Revision
System build-up – SFS frame	CB-001	0
System build up – Timber frame	CB-002	0
System build up – SFS & metal rails	CB-003	0
Foundation /DPC detail	CB-004	0
Window jamb	CB-005	0
Window head	CB-006	0
Window cill	CB-007	0
Soffit detail	CB-008	0
External corner detail	CB-009	0
Movement joint with backer rod	CB-010	0
Movement joint with TP600	CB-011	0
Horizontal slip joint	CB-012	0
Horizontal slip joint (2)	CB-013	0
Penetration detail	CB-014	0

Tremco CPG UK Ltd makes no representation regarding conformity of its suggestions to model building codes, engineering criteria, specific application details or project locations. All components indicated in the illustrations, as well as other that may be required for the integrity of the system shall be designed, detailed and engineered by a representative of the architect, owner or contractor to be in conformance with model codes, architectural and engineering requirements pertaining to specific building projects.

Tremco CPG UK Ltd makes no warranty, expressed or implied, as to the architectural design, engineering or workmanship of projects utilising Dryvit systems or products.

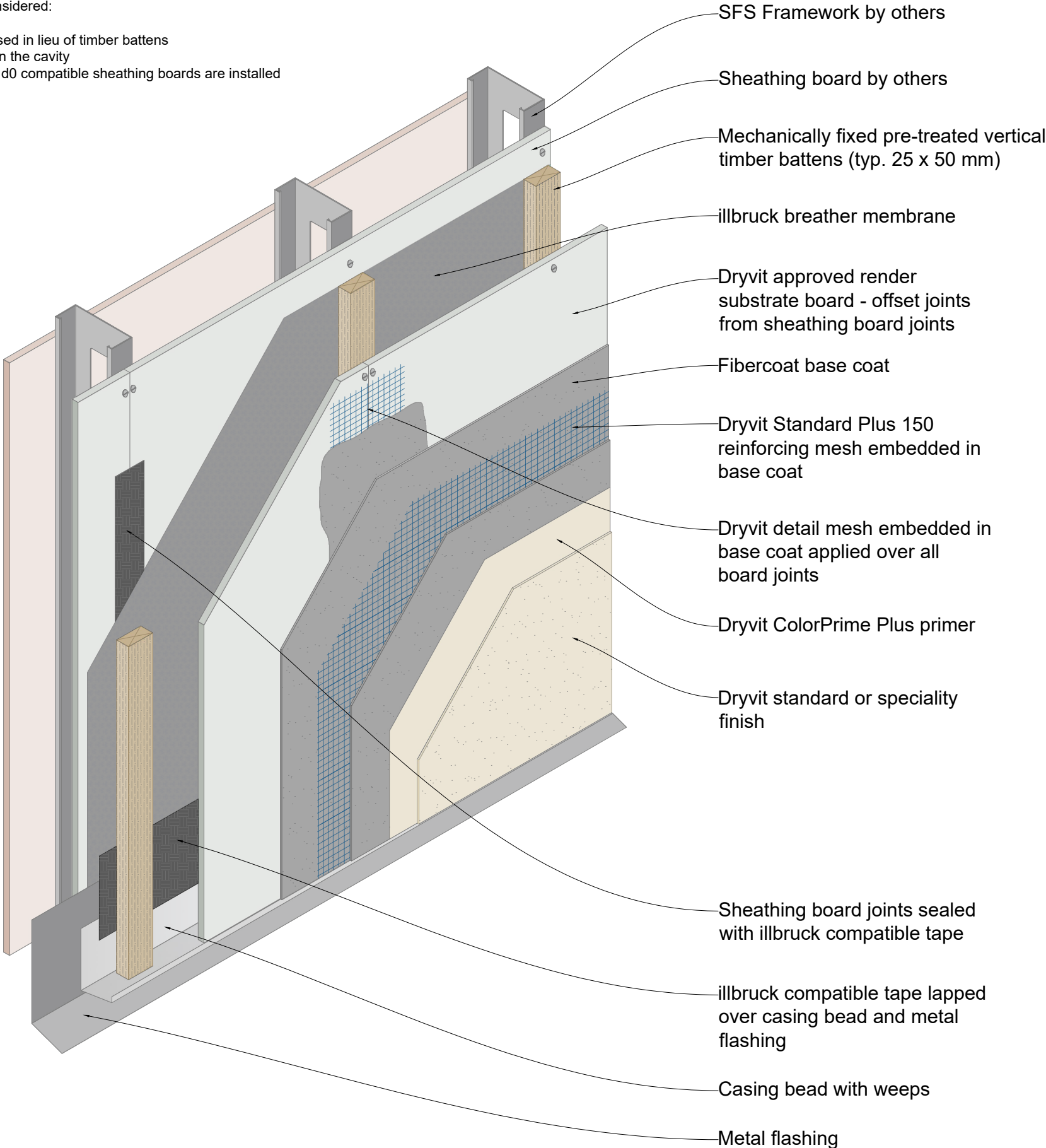
The liabilities of Tremco CPG UK Ltd shall be as stated in the standard warranty. Contact Tremco CPG UK Ltd for a full and complete copy of this warranty.

DISCLAIMER

Information contained in this document conforms to the standard detail requirements for a Dryvit EWI System as of the date of publication of this document and is presented in good faith. Tremco CPG UK Ltd. assumes no liability, expressed or implied, as to the architecture, engineering, or workmanship of any project. To ensure that you are using the latest, most complete information, contact Tremco CPG UK Ltd.

Note:
If the building is a relevant building or if there are any concerns over fire performance the following should be considered:

- Metal rails to be used in lieu of timber battens
- Fire stopping within the cavity
- A minimum A2-s1,d0 compatible sheathing boards are installed



General Notes

The architecture, engineering and design of the project using the Dryvit products is the responsibility of the project's design professional. All systems must comply with National Building Regulations and Standards.
This detail is for general information and guidance only and Tremco CPG UK Ltd specifically disclaims any liability for the use of this detail and for the architecture, design, engineering or workmanship of any project.
The project design professional determines, in its sole discretion, whether this detail or a functionally equivalent alternative is best suited for the project. Use of a functionally equivalent detail does not violate Tremco CPG UK's warranty.
These details are subject to change without notice. Please contact Tremco CPG UK to ensure you have the most recent version.



System
Cement Board MD

Project
Standard Detail Drawing

Title
System Build Up - SFS

Date
Jan 2023

Drg no
CB-001

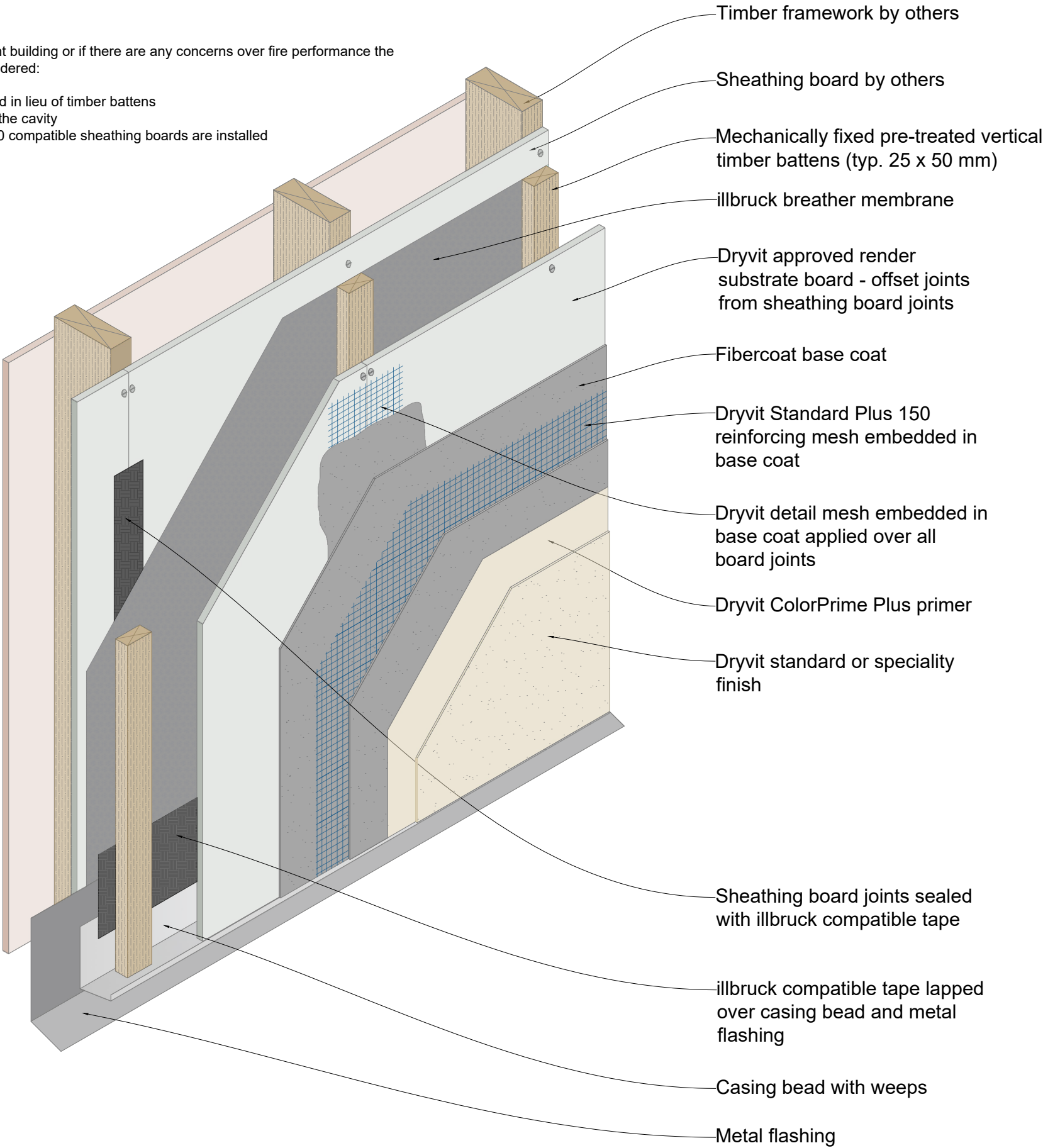
Scale
NTS

Drawn by
KM



Tremco CPG UK Ltd,
Coupland Road,
Hindley Green,
Wigan, Lancs. WN2 4HP
www.cpg-europe.com

- Note:
If the building is a relevant building or if there are any concerns over fire performance the following should be considered:
- Metal rails to be used in lieu of timber battens
 - Fire stopping within the cavity
 - A minimum A2-s1,d0 compatible sheathing boards are installed



General Notes

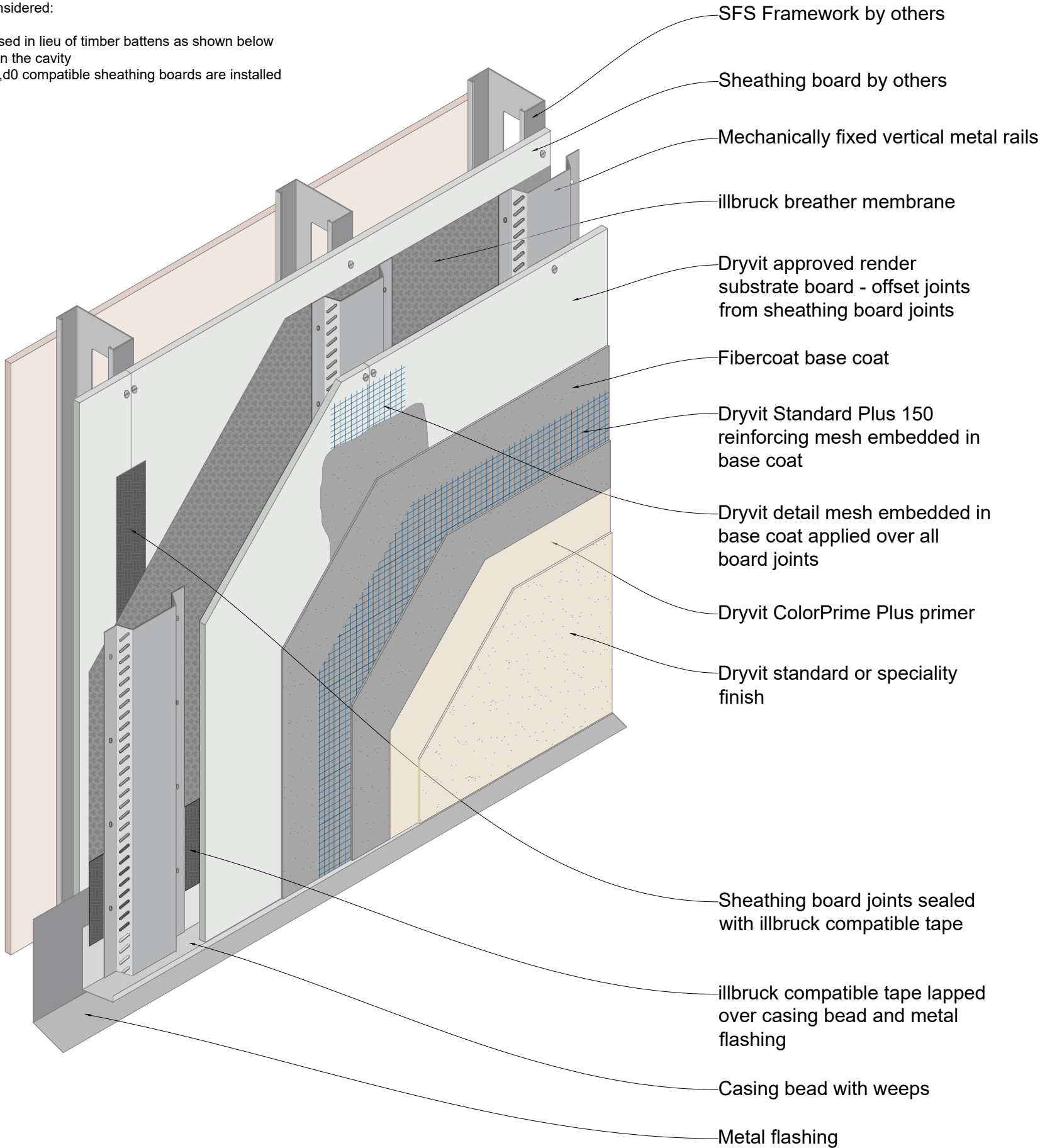
The architecture, engineering and design of the project using the Dryvit products is the responsibility of the project's design professional. All systems must comply with National Building Regulations and Standards.
This detail is for general information and guidance only and Tremco CPG UK Ltd specifically disclaims any liability for the use of this detail and for the architecture, design, engineering or workmanship of any project.
The project design professional determines, in its sole discretion, whether this detail or a functionally equivalent alternative is best suited for the project. Use of a functionally equivalent detail does not violate Tremco CPG UK's warranty.
These details are subject to change without notice. Please contact Tremco CPG UK to ensure you have the most recent version.



System	
Cement Board MD	
Project	
Standard Detail Drawing	
Title	
System Build Up - Timber frame	
Date	Drg no
Jan 2023	CB-002
Scale	Drawn by
NTS	KM
Tremco CPG UK Ltd, Coupland Road, Hindley Green, Wigan, Lancs. WN2 4HP www.cpg-europe.com	

Note:
If the building is a relevant building or if there are any concerns over fire performance the following should be considered:

- Metal rails to be used in lieu of timber battens as shown below
- Fire stopping within the cavity
- A minimum A2-s1,d0 compatible sheathing boards are installed



General Notes

The architecture, engineering and design of the project using the Dryvit products is the responsibility of the project's design professional. All systems must comply with National Building Regulations and Standards.
This detail is for general information and guidance only and Tremco CPG UK Ltd specifically disclaims any liability for the use of this detail and for the architecture, design, engineering or workmanship of any project.
The project design professional determines, in its sole discretion, whether this detail or a functionally equivalent alternative is best suited for the project. Use of a functionally equivalent detail does not violate Tremco CPG UK's warranty.
These details are subject to change without notice. Please contact Tremco CPG UK to ensure you have the most recent version.



System
Cement Board MD

Project
Standard Detail Drawing

Title
System Build Up - Metal Rails

Date
Jan 2023

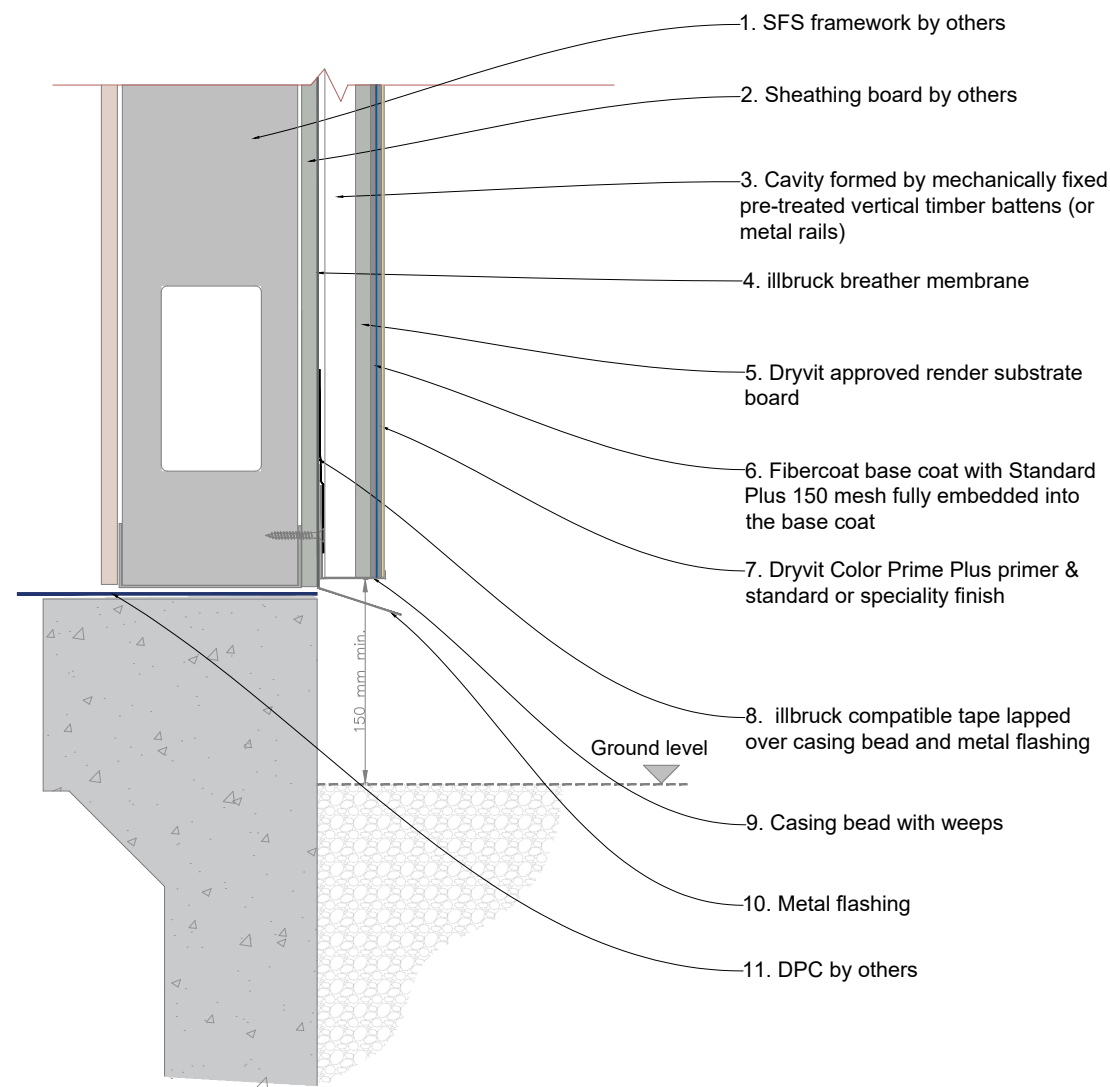
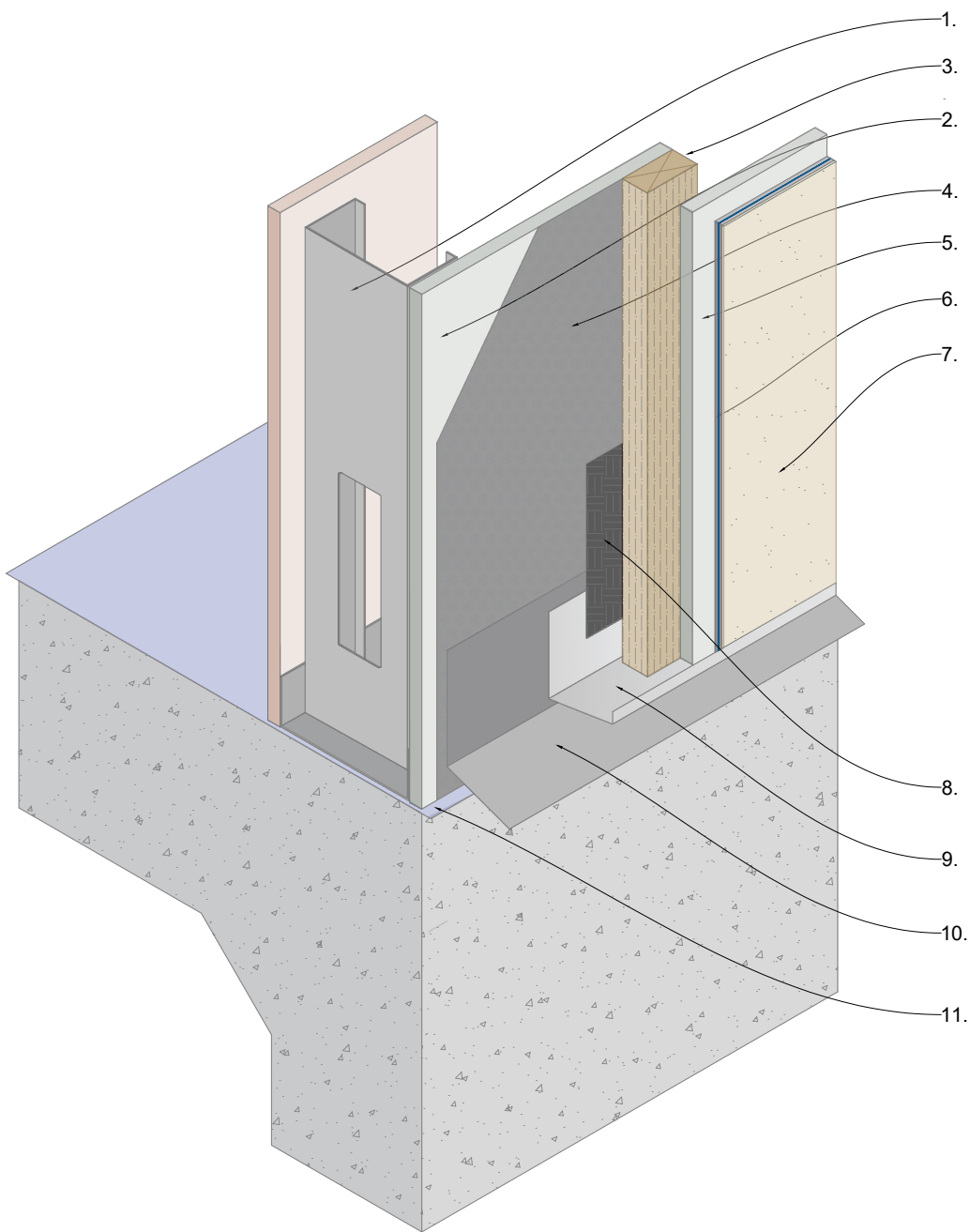
Drg no
CB-003

Scale
NTS

Drawn by
KM



Tremco CPG UK Ltd,
Coupland Road,
Hindley Green,
Wigan, Lancs. WN2 4HP
www.cpg-europe.com



General Notes

The architecture, engineering and design of the project using the Dryvit products is the responsibility of the project's design professional. All systems must comply with National Building Regulations and Standards.

This detail is for general information and guidance only and Tremco CPG UK Ltd specifically disclaims any liability for the use of this detail and for the architecture, design, engineering or workmanship of any project.

The project design professional determines, in its sole discretion, whether this detail or a functionally equivalent alternative is best suited for the project. Use of a functionally equivalent detail does not violate Tremco CPG UK's warranty.

These details are subject to change without notice. Please contact Tremco CPG UK to ensure you have the most recent version.



System

Cement Board MD

Project

Standard Detail Drawing

Title

Foundation /DPC detail

Date

Jan 2023

Drg no

CB-004

Scale

NTS

Drawn by

KM



Tremco CPG UK Ltd,
Coupland Road,
Hindley Green,
Wigan, Lancs. WN2 4HP
www.cpg-europe.com

General Notes

The architecture, engineering and design of the project using the Dryvit products is the responsibility of the project's design professional. All systems must comply with National Building Regulations and Standards.

This detail is for general information and guidance only and Tremco CPG UK Ltd specifically disclaims any liability for the use of this detail and for the architecture, design, engineering or workmanship of any project.

The project design professional determines, in its sole discretion, whether this detail or a functionally equivalent alternative is best suited for the project. Use of a functionally equivalent detail does not violate Tremco CPG UK's warranty.

These details are subject to change without notice. Please contact Tremco CPG UK to ensure you have the most recent version.



System

Cement Board MD

Project

Standard Detail Drawing

Title

Window Jamb detail

Date

Jan 2023

Drg no

CB-005

Scale

NTS

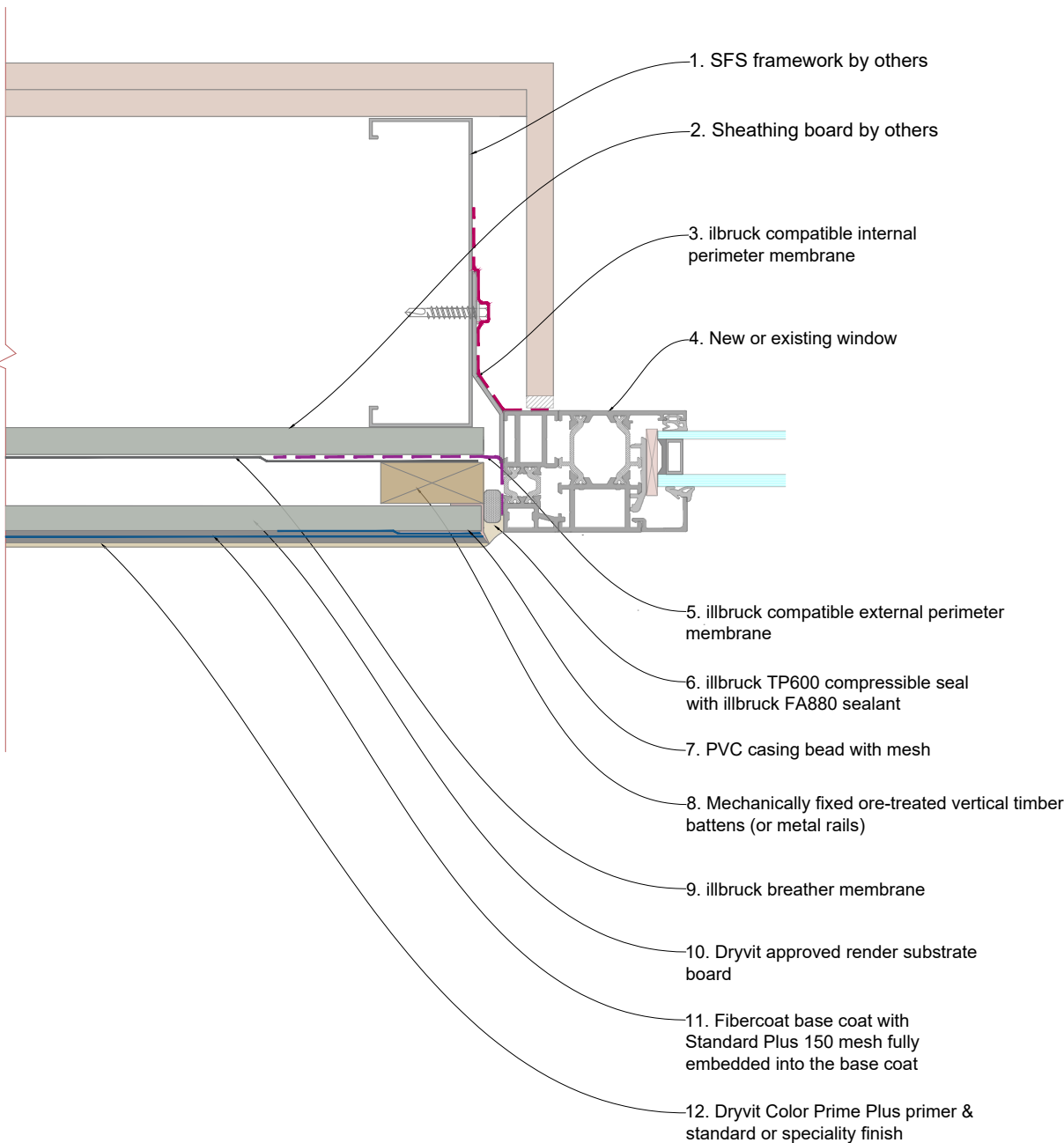
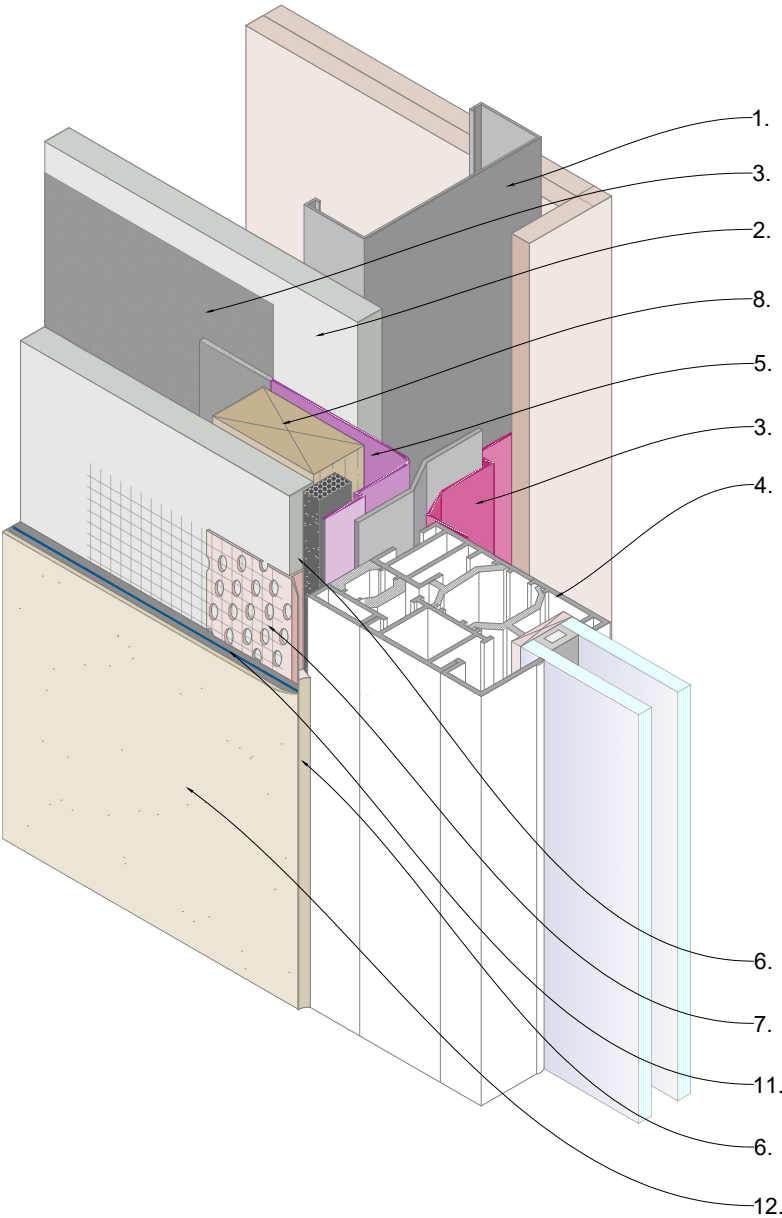
Drawn by

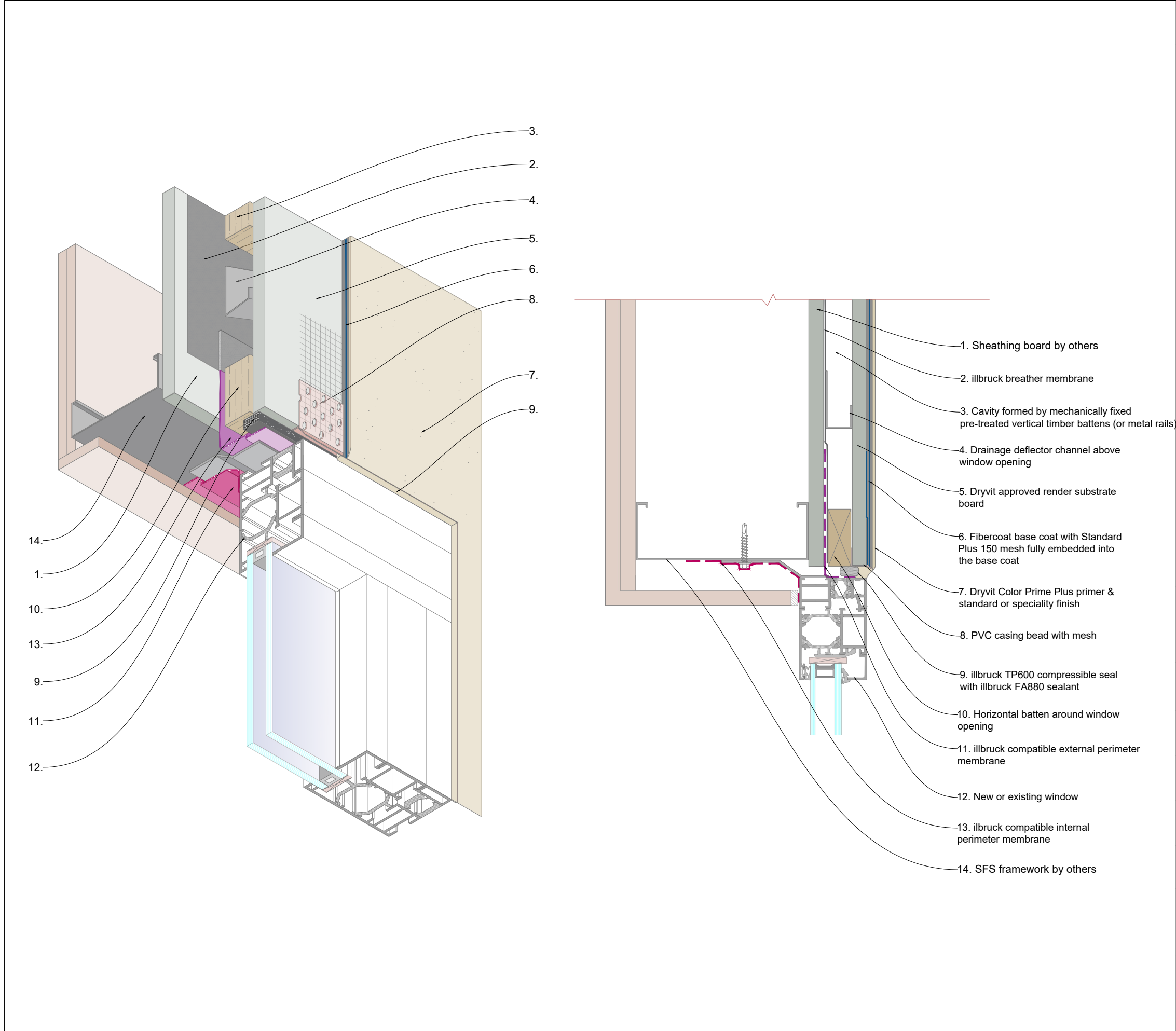
KM



Construction
Products Group
Europe

Tremco CPG UK Ltd,
Coupland Road,
Hindley Green,
Wigan, Lancs. WN2 4HP
www.cpg-europe.com





General Notes

The architecture, engineering and design of the project using the Dryvit products is the responsibility of the project's design professional. All systems must comply with National Building Regulations and Standards.

This detail is for general information and guidance only and Tremco CPG UK Ltd specifically disclaims any liability for the use of this detail and for the architecture, design, engineering of workmanship of any project.

The project design professional determines, in its sole discretion, whether this detail or a functionally equivalent alternative is best suited for the project. Use of a functionally equivalent detail does not violate Tremco CPG UK's warranty.

These details are subject to change without notice. Please contact Tremco CPG UK to ensure you have the most recent version.



System
Cement Board MD

Project
Standard Detail Drawing

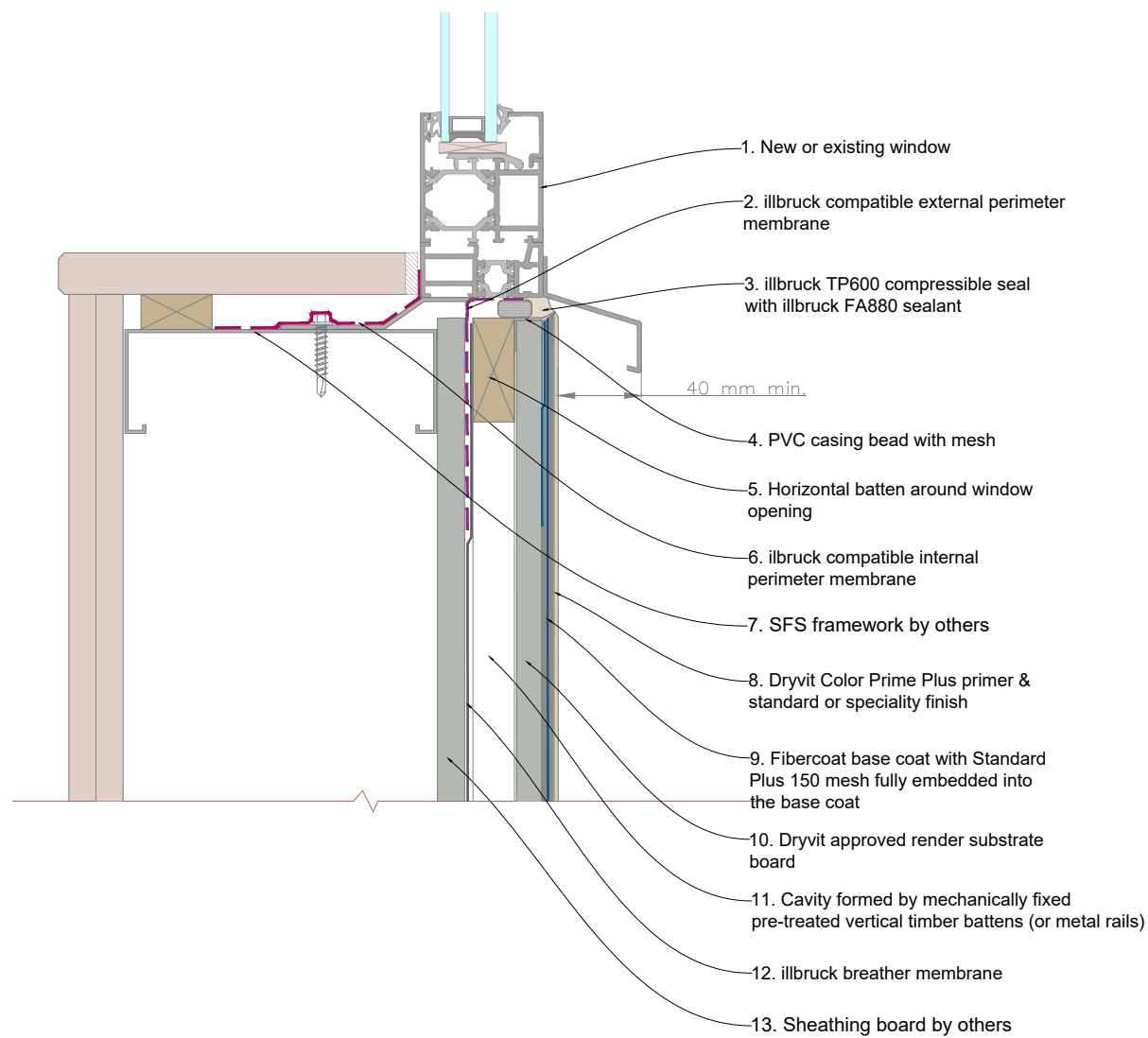
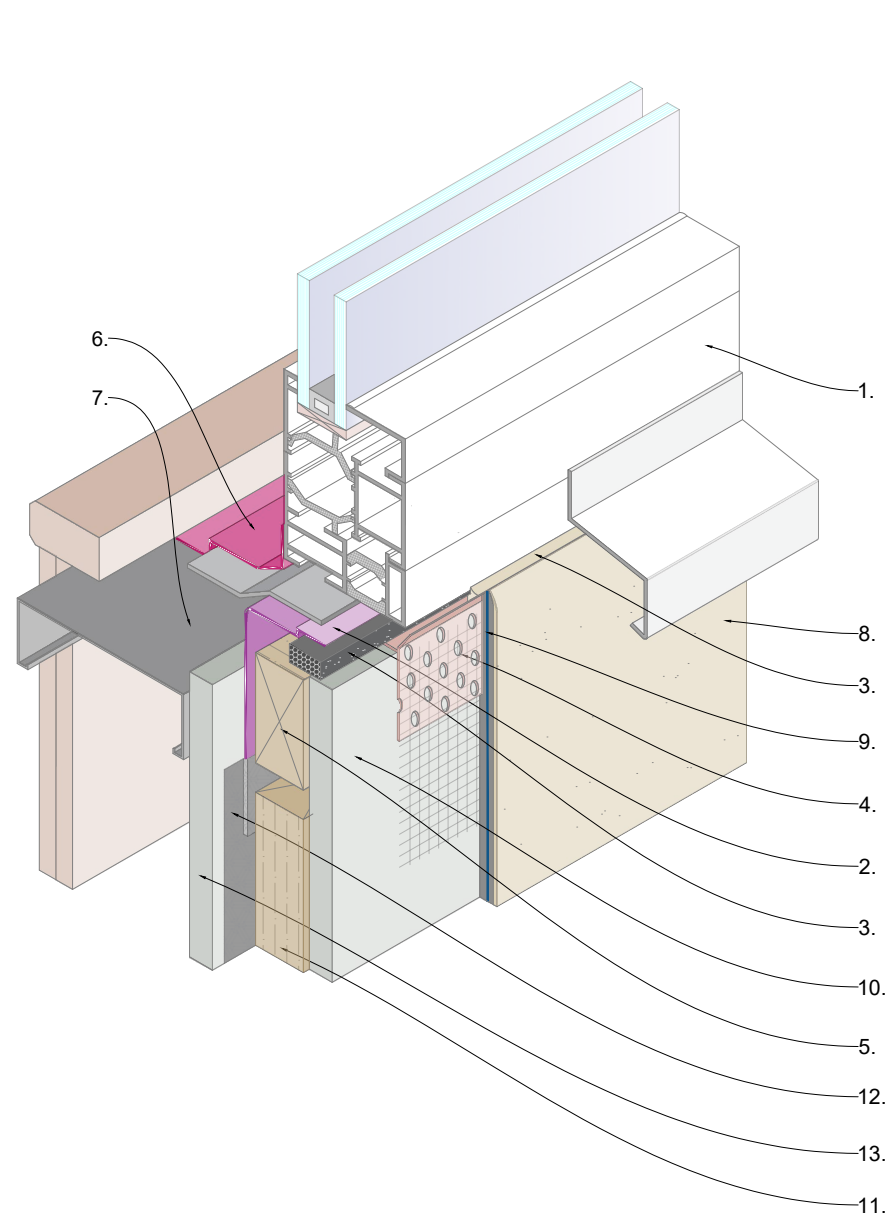
Title
Window Head detail

Date Jan 2023	Drg no CB-006
------------------	------------------

Scale NTS	Drawn by KM
--------------	----------------



Tremco CPG UK Ltd,
Coupland Road,
Hindley Green,
Wigan, Lancs. WN2 4HP
www.cpg-europe.com



General Notes

The architecture, engineering and design of the project using the Dryvit products is the responsibility of the project's design professional. All systems must comply with National Building Regulations and Standards.

This detail is for general information and guidance only and Tremco CPG UK Ltd specifically disclaims any liability for the use of this detail and for the architecture, design, engineering or workmanship of any project.

The project design professional determines, in its sole discretion, whether this detail or a functionally equivalent alternative is best suited for the project. Use of a functionally equivalent detail does not violate Tremco CPG UK's warranty.

These details are subject to change without notice. Please contact Tremco CPG UK to ensure you have the most recent version.



System

Cement Board MD

Project

Standard Detail Drawing

Title

Window Cill detail

Date

Jan 2023

Drg no

CB-007

Scale

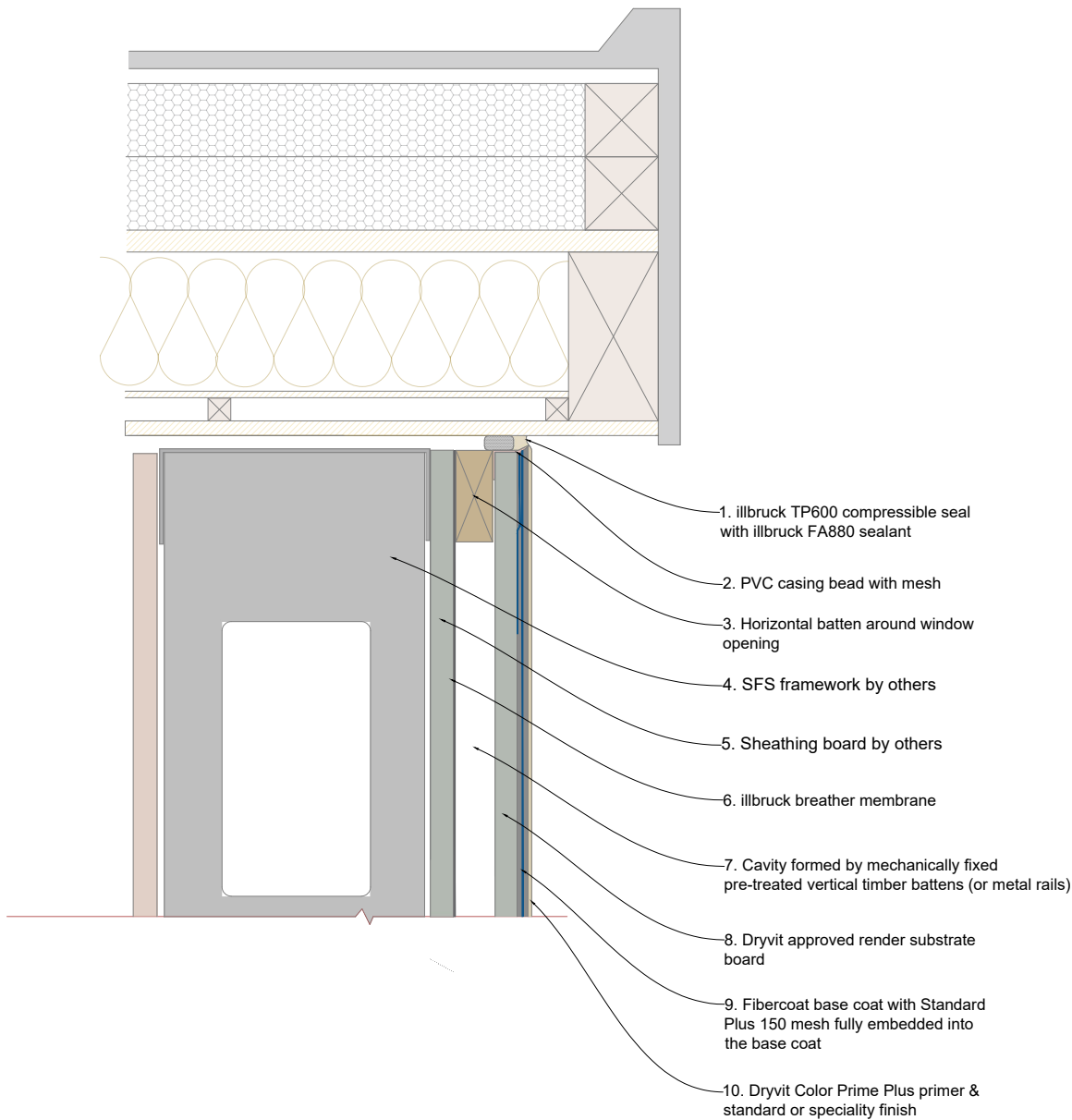
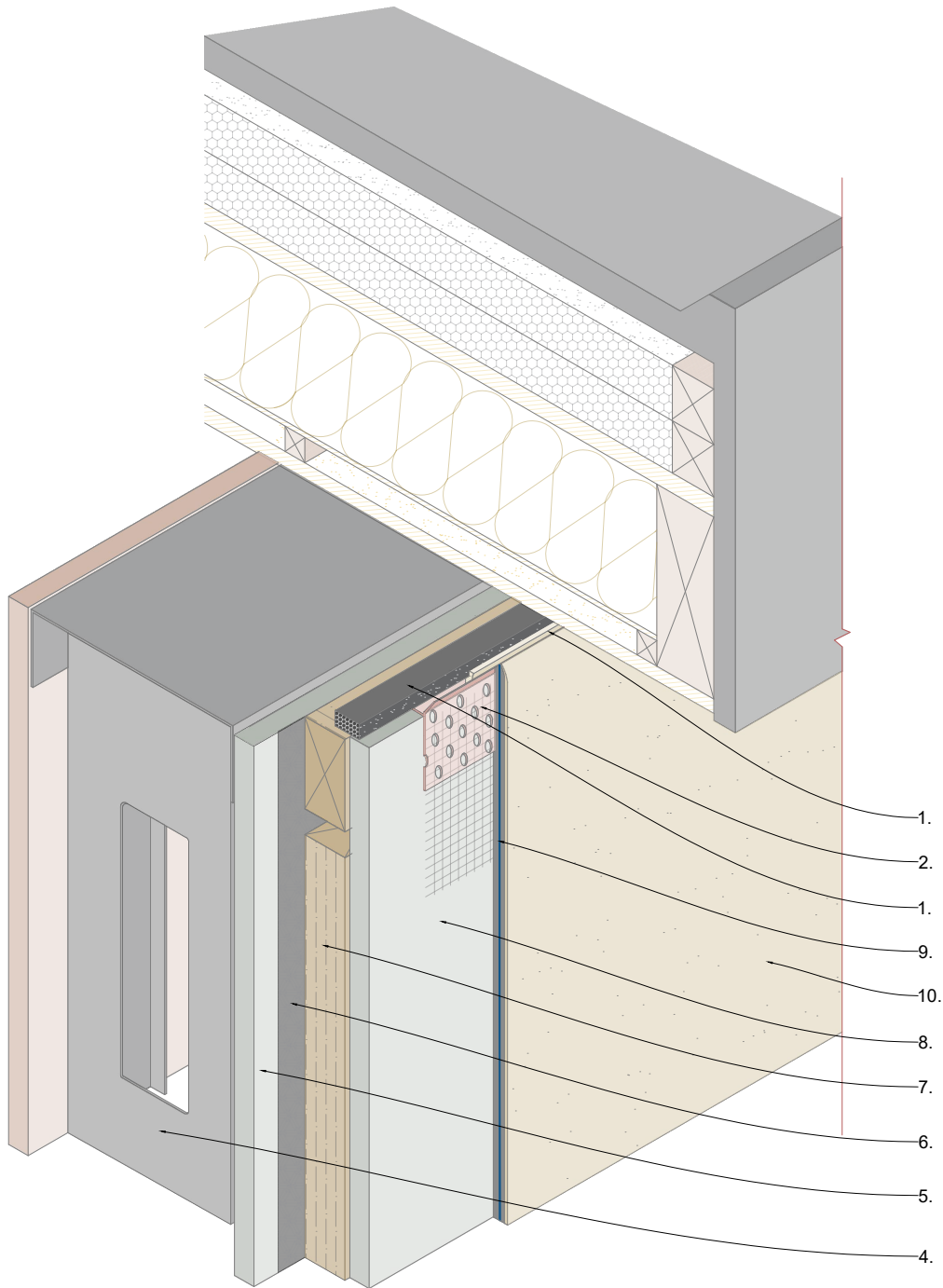
NTS

Drawn by

KM



Tremco CPG UK Ltd,
Coupland Road,
Hindley Green,
Wigan, Lancs. WN2 4HP
www.cpg-europe.com



General Notes

The architecture, engineering and design of the project using the Dryvit products is the responsibility of the project's design professional. All systems must comply with National Building Regulations and Standards.
This detail is for general information and guidance only and Tremco CPG UK Ltd specifically disclaims any liability for the use of this detail and for the architecture, design, engineering of workmanship of any project.
The project design professional determines, in its sole discretion, whether this detail or a functionally equivalent alternative is best suited for the project. Use of a functionally equivalent detail does not violate Tremco CPG UK's warranty.
These details are subject to change without notice. Please contact Tremco CPG UK to ensure you have the most recent version.



System
Cement Board MD

Project
Standard Detail Drawing

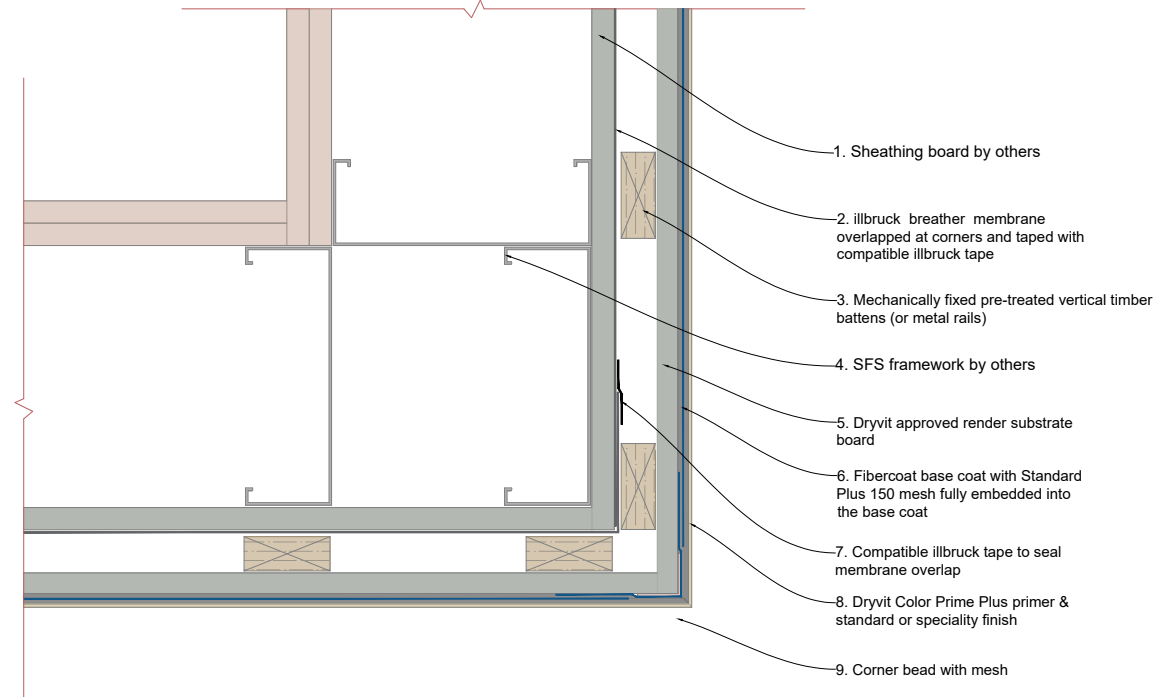
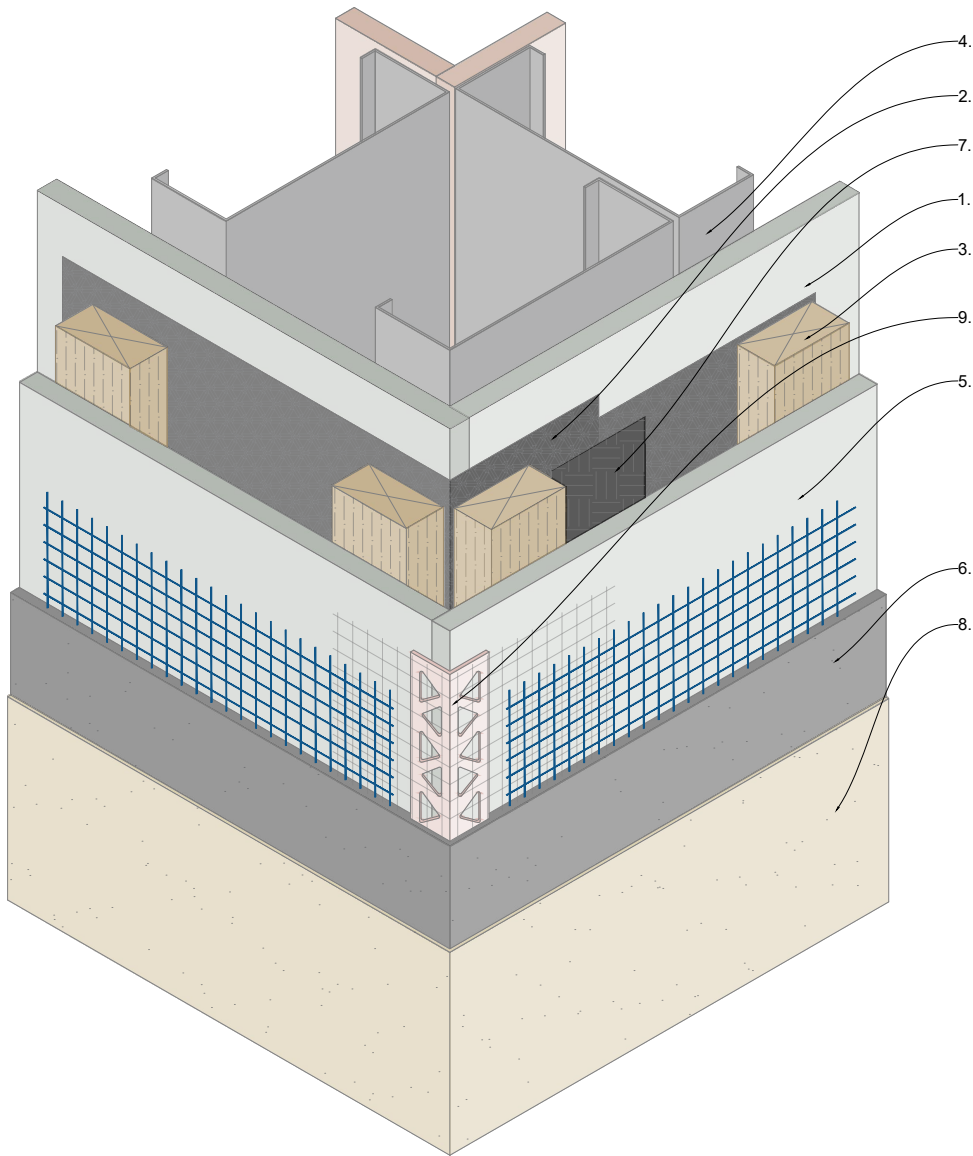
Title
Soffit detail

Date Jan 2023	Drg no CB-008
-------------------------	-------------------------

Scale NTS	Drawn by KM
---------------------	-----------------------



Tremco CPG UK Ltd,
Coupland Road,
Hindley Green,
Wigan, Lancs. WN2 4HP
www.cpg-europe.com



General Notes

The architecture, engineering and design of the project using the Dryvit products is the responsibility of the project's design professional. All systems must comply with National Building Regulations and Standards.

This detail is for general information and guidance only and Tremco CPG UK Ltd specifically disclaims any liability for the use of this detail and for the architecture, design, engineering of workmanship of any project.

The project design professional determines, in its sole discretion, whether this detail or a functionally equivalent alternative is best suited for the project. Use of a functionally equivalent detail does not violate Tremco CPG UK's warranty.

These details are subject to change without notice. Please contact Tremco CPG UK to ensure you have the most recent version.



System
Cement Board MD

Project
Standard Detail Drawing

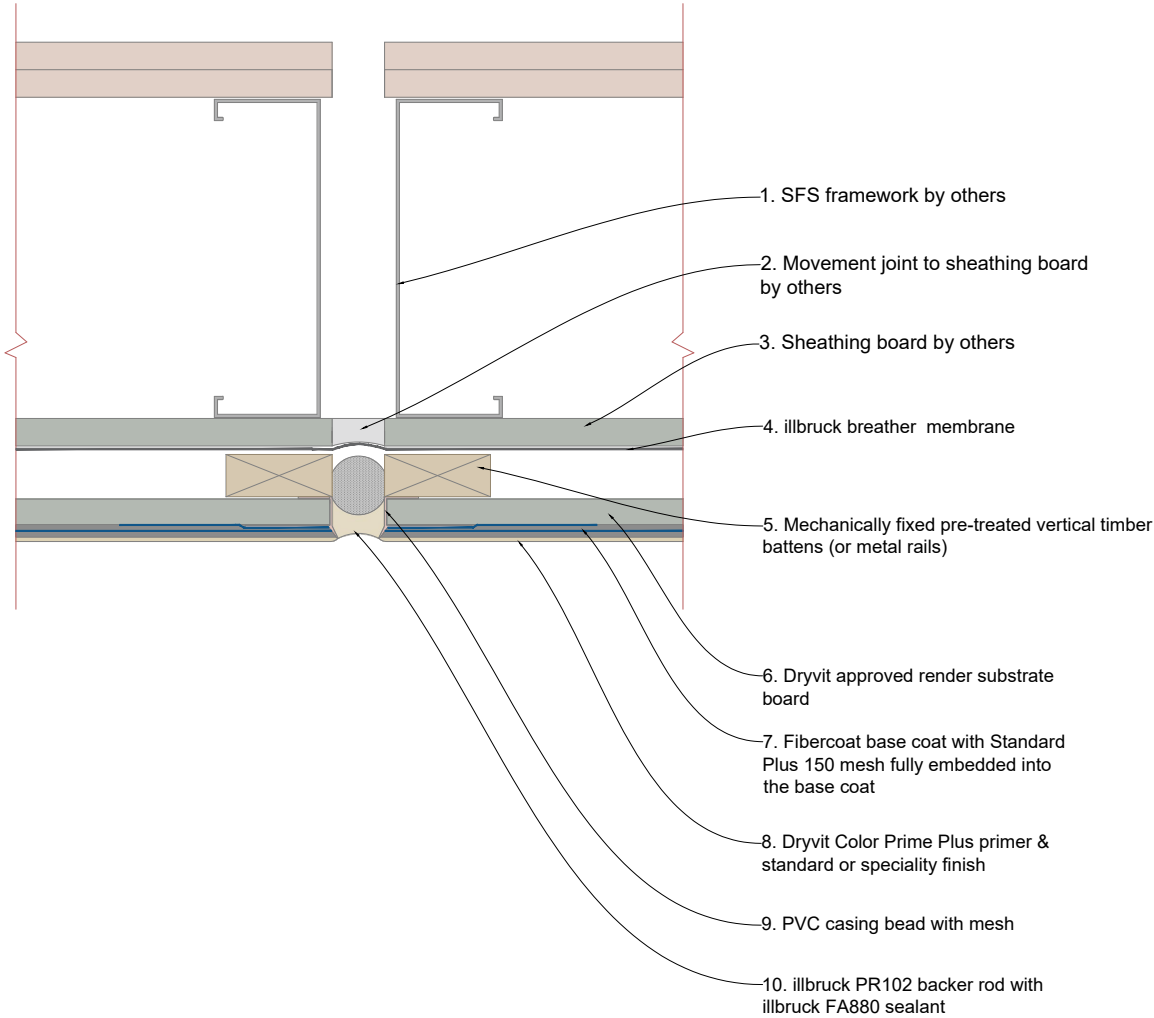
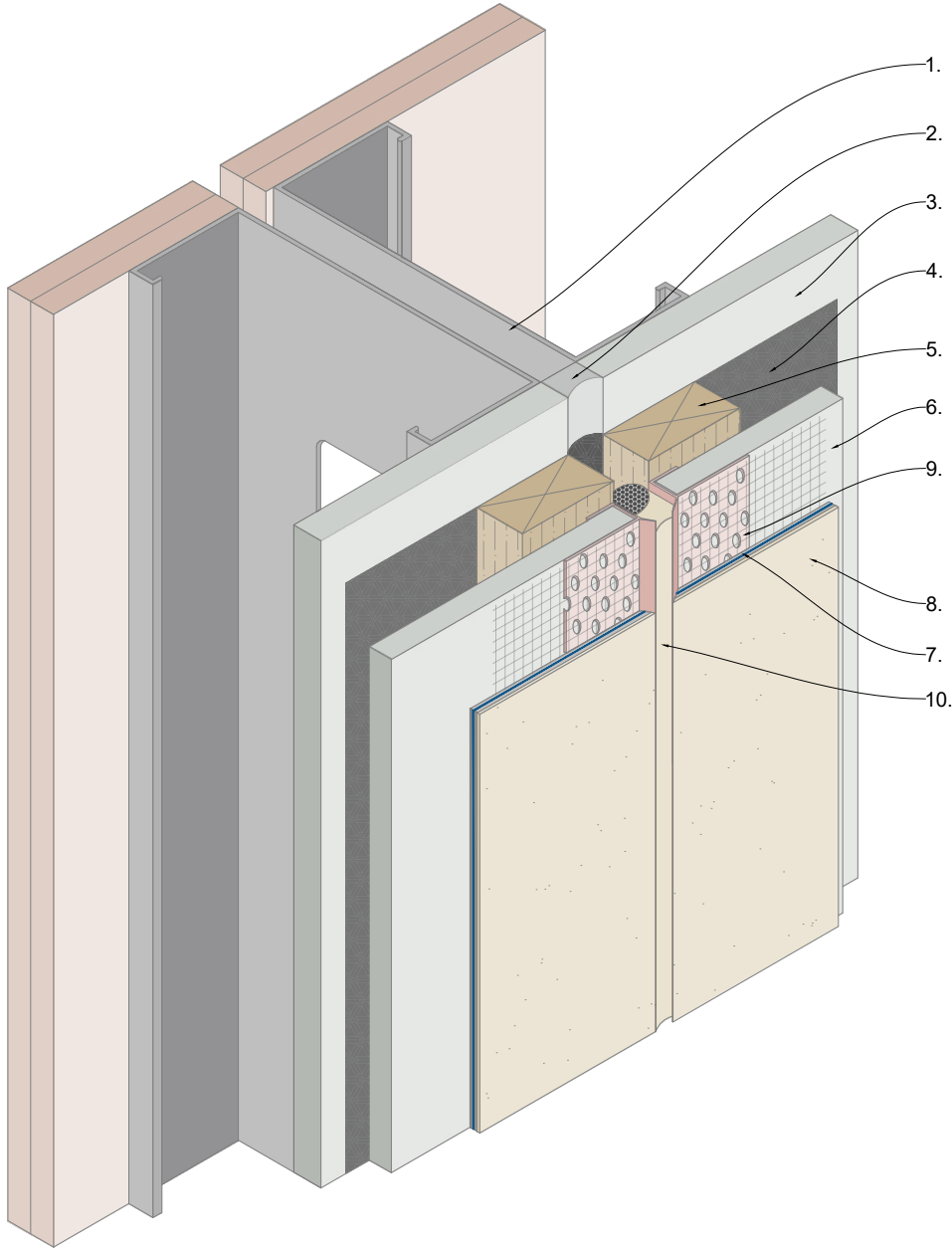
Title
External corner detail

Date Jan 2023	Drg no CB-009
-------------------------	-------------------------

Scale NTS	Drawn by KM
---------------------	-----------------------



Tremco CPG UK Ltd,
Coupland Road,
Hindley Green,
Wigan, Lancs. WN2 4HP
www.cpg-europe.com



General Notes

The architecture, engineering and design of the project using the Dryvit products is the responsibility of the project's design professional. All systems must comply with National Building Regulations and Standards.

This detail is for general information and guidance only and Tremco CPG UK Ltd specifically disclaims any liability for the use of this detail and for the architecture, design, engineering or workmanship of any project.

The project design professional determines, in its sole discretion, whether this detail or a functionally equivalent alternative is best suited for the project. Use of a functionally equivalent detail does not violate Tremco CPG UK's warranty.

These details are subject to change without notice. Please contact Tremco CPG UK to ensure you have the most recent version.



System

Cement Board MD

Project

Standard Detail Drawing

Title

Movement joint with backer rod

Date

Jan 2023

Drg no

CB-010

Scale

NTS

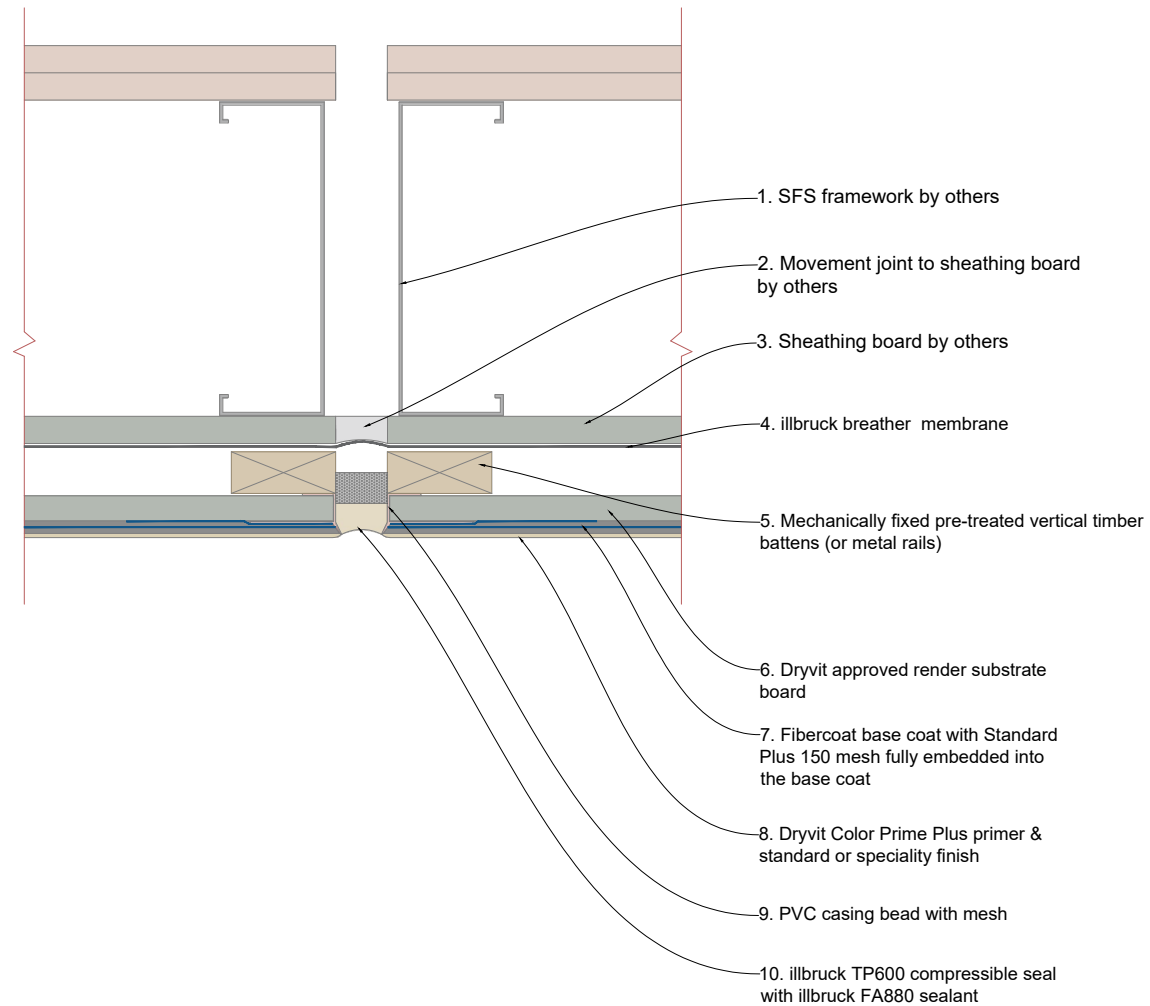
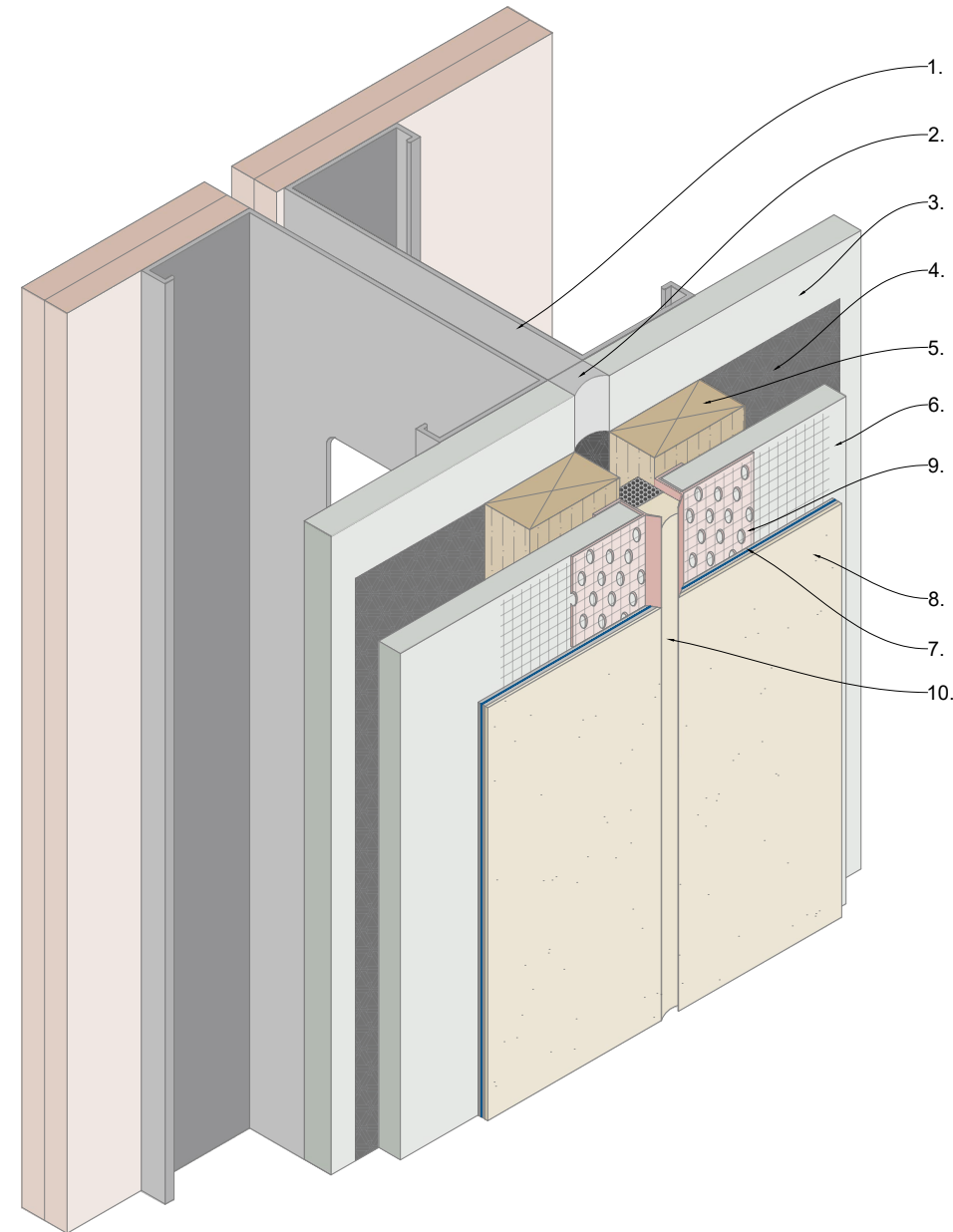
Drawn by

KM



Construction
Products Group
Europe

Tremco CPG UK Ltd,
Coupland Road,
Hindley Green,
Wigan, Lancs. WN2 4HP
www.cpg-europe.com



General Notes

The architecture, engineering and design of the project using the Dryvit products is the responsibility of the project's design professional. All systems must comply with National Building Regulations and Standards.

This detail is for general information and guidance only and Tremco CPG UK Ltd specifically disclaims any liability for the use of this detail and for the architecture, design, engineering or workmanship of any project.

The project design professional determines, in its sole discretion, whether this detail or a functionally equivalent alternative is best suited for the project. Use of a functionally equivalent detail does not violate Tremco CPG UK's warranty.

These details are subject to change without notice. Please contact Tremco CPG UK to ensure you have the most recent version.



System

Cement Board MD

Project

Standard Detail Drawing

Title

Movement joint with TP600

Date

Jan 2023

Drg no

CB-011

Scale

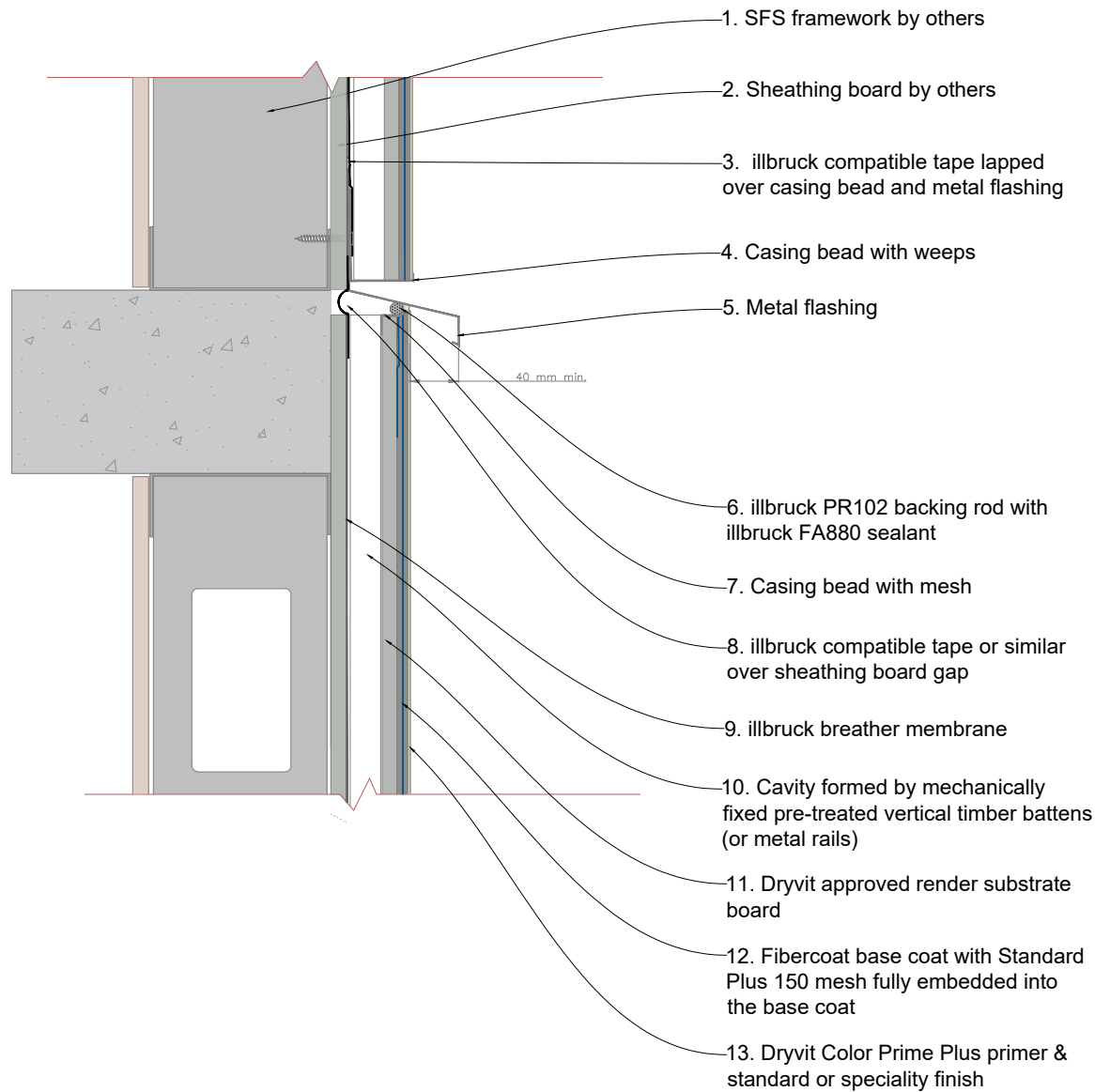
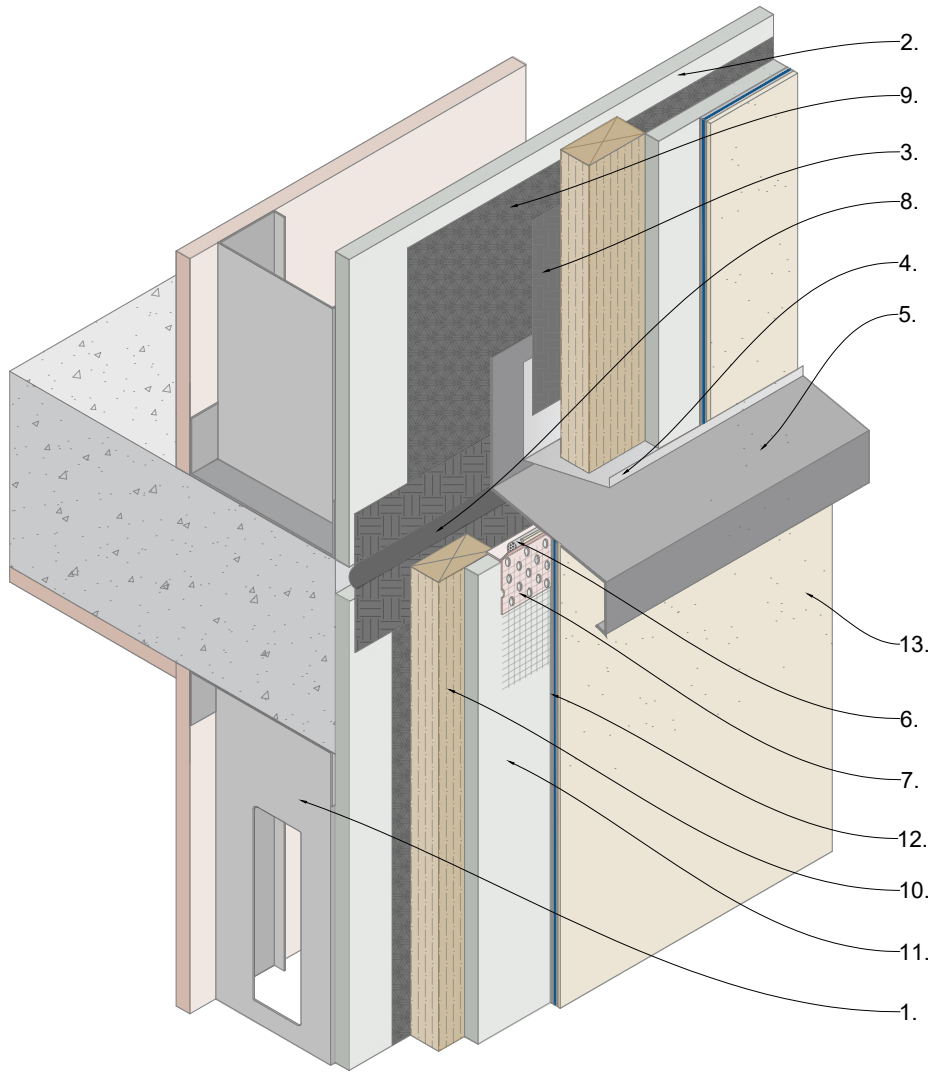
NTS

Drawn by

KM



Tremco CPG UK Ltd,
Coupland Road,
Hindley Green,
Wigan, Lancs. WN2 4HP
www.cpg-europe.com



General Notes

The architecture, engineering and design of the project using the Dryvit products is the responsibility of the project's design professional. All systems must comply with National Building Regulations and Standards.

This detail is for general information and guidance only and Tremco CPG UK Ltd specifically disclaims any liability for the use of this detail and for the architecture, design, engineering or workmanship of any project.

The project design professional determines, in its sole discretion, whether this detail or a functionally equivalent alternative is best suited for the project. Use of a functionally equivalent detail does not violate Tremco CPG UK's warranty.

These details are subject to change without notice. Please contact Tremco CPG UK to ensure you have the most recent version.



System

Cement Board MD

Project

Standard Detail Drawing

Title

Horizontal slip joint detail

Date

Jan 2023

Drg no

CB-012

Scale

NTS

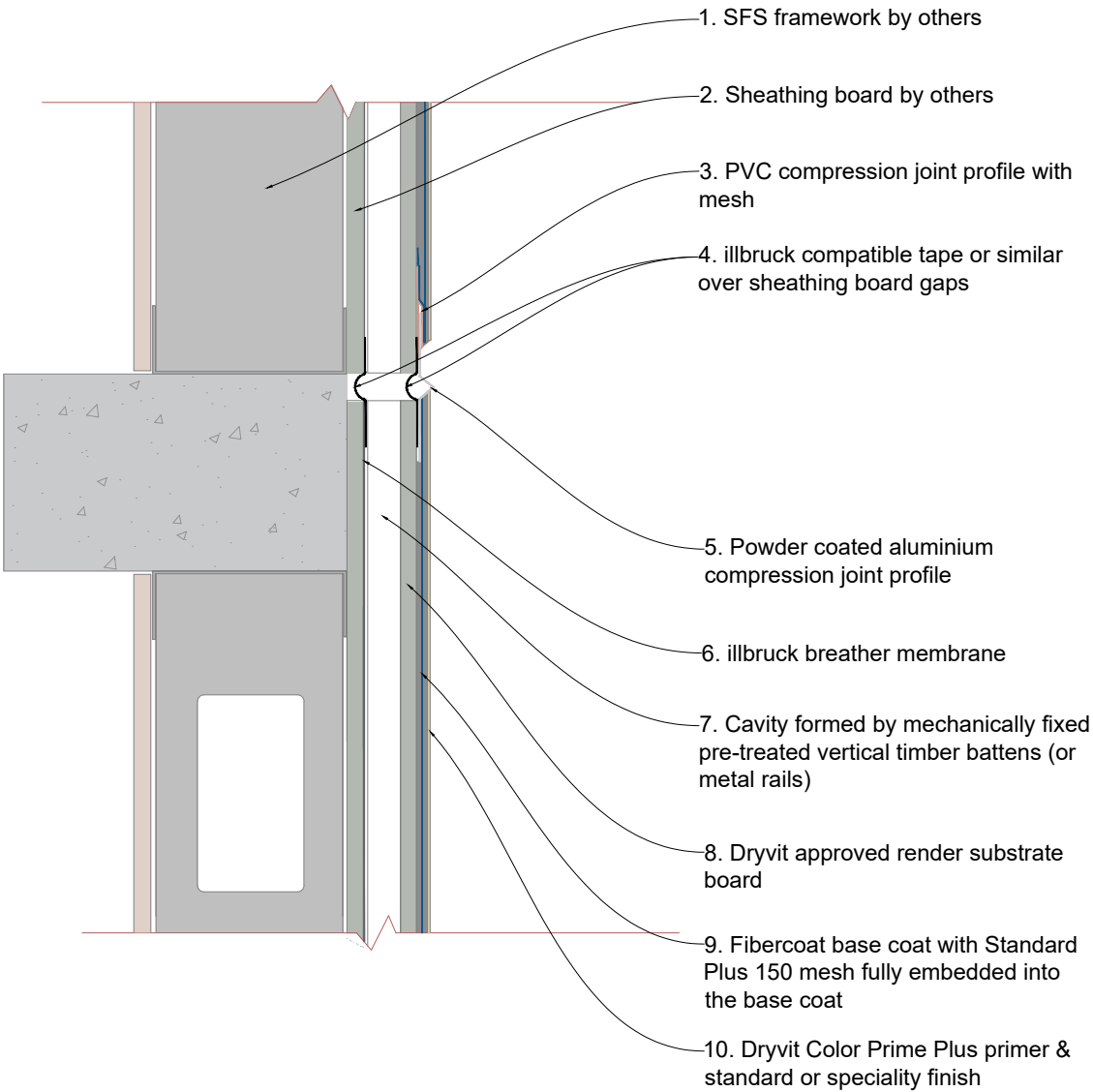
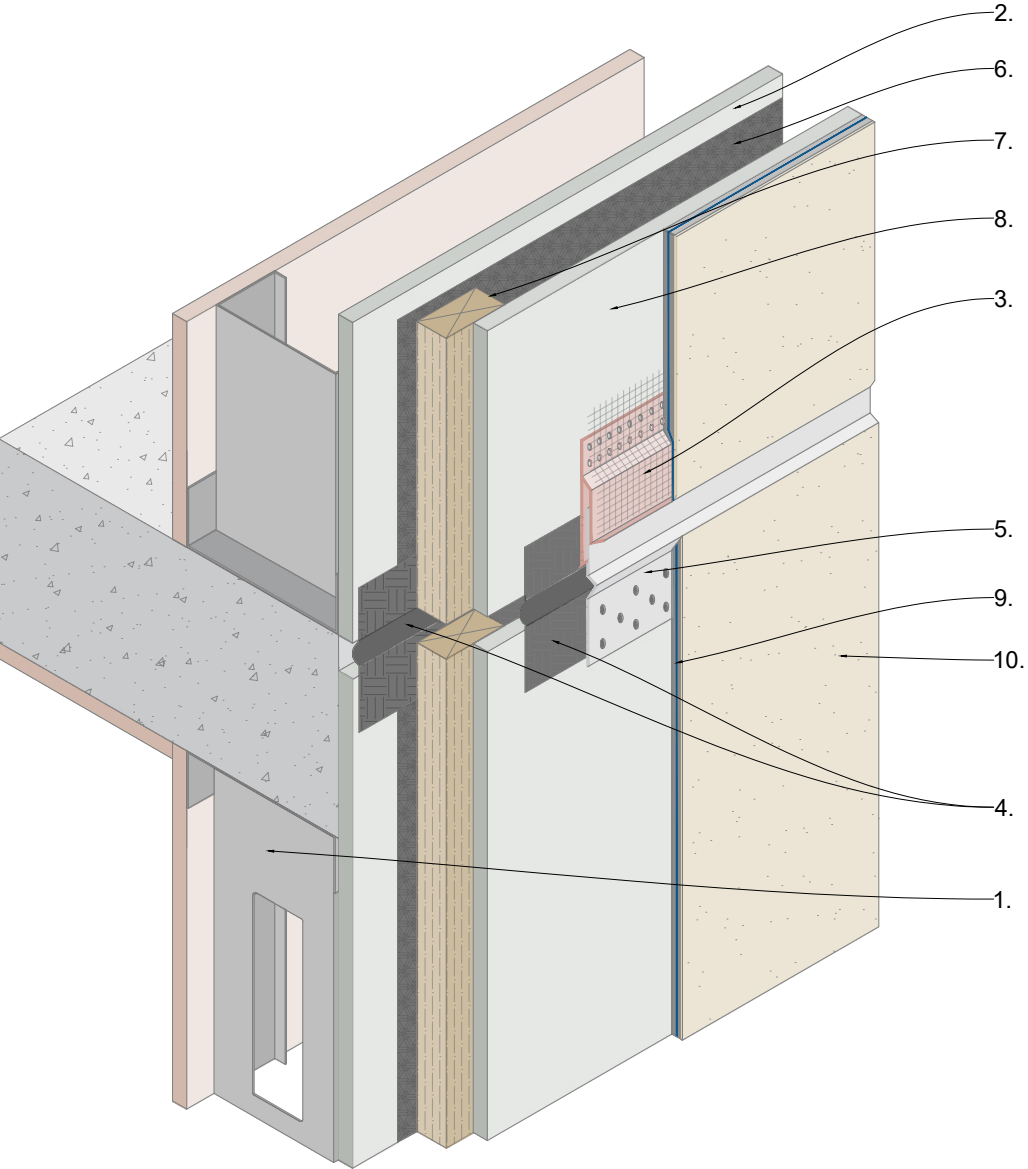
Drawn by

KM



Construction
Products Group
Europe

Tremco CPG UK Ltd,
Coupland Road,
Hindley Green,
Wigan, Lancs. WN2 4HP
www.cpg-europe.com



General Notes

The architecture, engineering and design of the project using the Dryvit products is the responsibility of the project's design professional. All systems must comply with National Building Regulations and Standards.

This detail is for general information and guidance only and Tremco CPG UK Ltd specifically disclaims any liability for the use of this detail and for the architecture, design, engineering of workmanship of any project.

The project design professional determines, in its sole discretion, whether this detail or a functionally equivalent alternative is best suited for the project. Use of a functionally equivalent detail does not violate Tremco CPG UK's warranty.

These details are subject to change without notice. Please contact Tremco CPG UK to ensure you have the most recent version.



System
Cement Board MD

Project
Standard Detail Drawing

Title
Horizontal slip joint detail

Date
Jan 2023

Drg no
CB-013

Scale
NTS

Drawn by
KM



Tremco CPG UK Ltd,
Coupland Road,
Hindley Green,
Wigan, Lancs. WN2 4HP
www.cpg-europe.com

General Notes

The architecture, engineering and design of the project using the Dryvit products is the responsibility of the project's design professional. All systems must comply with National Building Regulations and Standards.
This detail is for general information and guidance only and Tremco CPG UK Ltd specifically disclaims any liability for the use of this detail and for the architecture, design, engineering or workmanship of any project.
The project design professional determines, in its sole discretion, whether this detail or a functionally equivalent alternative is best suited for the project. Use of a functionally equivalent detail does not violate Tremco CPG UK's warranty.
These details are subject to change without notice. Please contact Tremco CPG UK to ensure you have the most recent version.



System
Cement Board MD

Project
Standard Detail Drawing

Title
Penetration detail

Date Jan 2023	Drg no CB-014
------------------	------------------

Scale NTS	Drawn by KM
--------------	----------------



Tremco CPG UK Ltd,
Coupland Road,
Hindley Green,
Wigan, Lancs. WN2 4HP
www.cpg-europe.com

